



Sherlock* Tip Location System Cable Clip Attachment Instructions

Step 1: Use an alcohol wipe to thoroughly clean the area shown in Figure 1.

Step 2: Apply the USB clip to the cleaned area by peeling off the adhesive backing and attaching it to the surface as shown in Figure 2

NOTE: It is recommended that the open portion of the clip face the back of the Site~Rite* 5/6 Ultrasound System Scanner as shown in Figure 3.



Figure 1.



Figure 2.

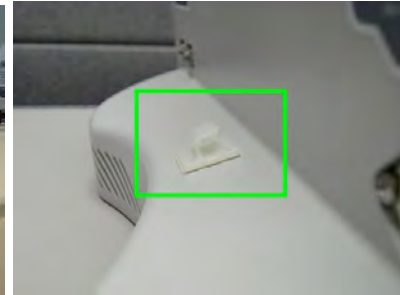


Figure 3.

Step 3: Leave enough slack so that the cable follows the contour of the base of the Site~Rite* 5/6 Ultrasound System Scanner and push the cable into the clip as shown in Figure 4.

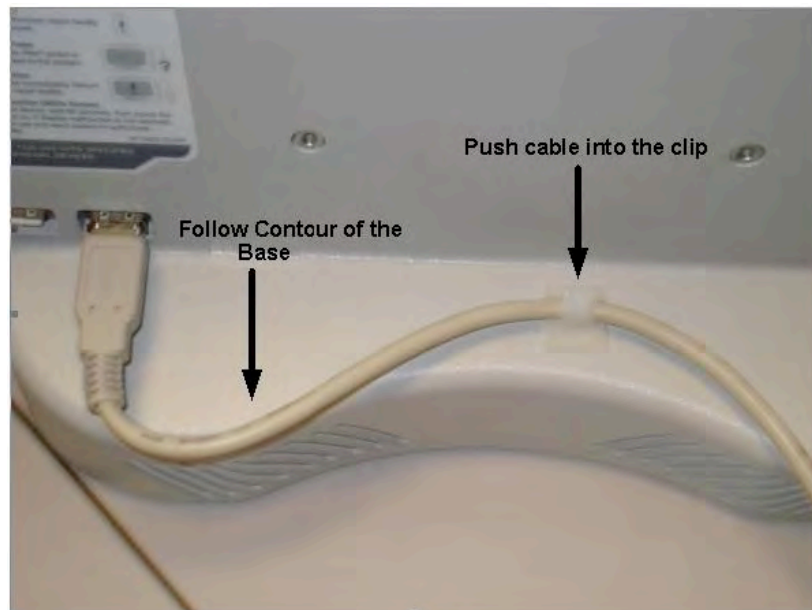


Figure 4.

Bard Access Systems, Inc.
605 North 5600 West
Salt Lake City, UT 84116
U.S.A.
(801) 522-5000

Customer Service: (800) 545-0890, Clinical Information: (800) 443-3385, Fax: (801) 595-4948
* Bard, Sherlock and Site~Rite are trademarks and/or registered trademarks of C. R. Bard, Inc.
© 2009. All Rights reserved.

0718053 0911R